

# all-staff meeting

Hartford Union High School District

February 17, 2025

# BRAYARCHITECTS



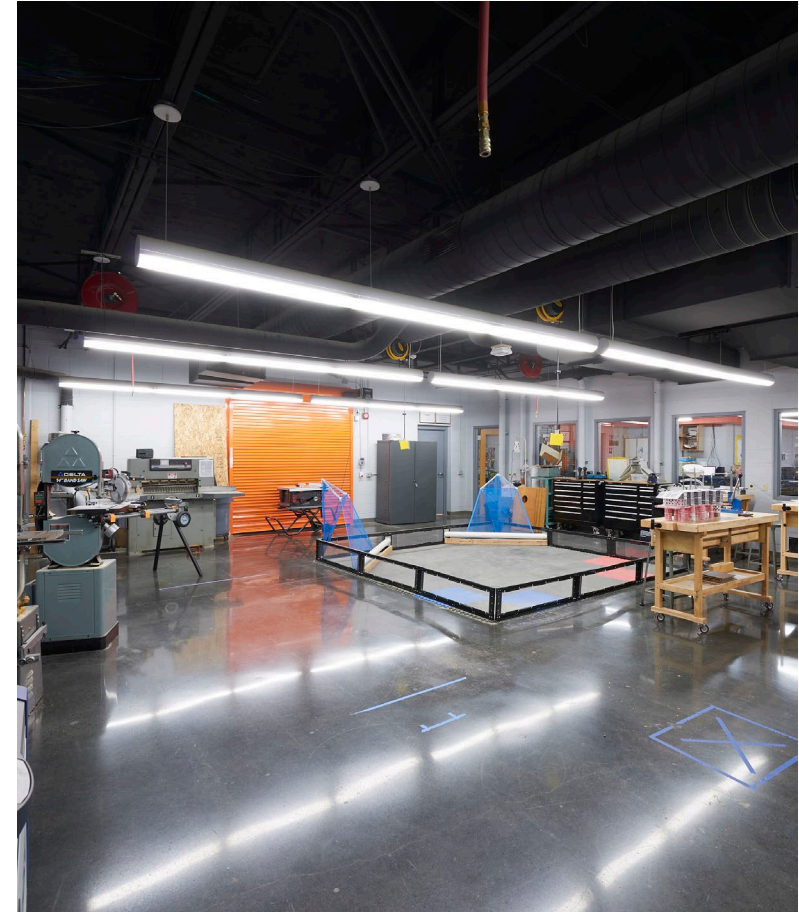
# project team

**BRAY**  
ARCHITECTS

ARCHITECTURE  
INTERIOR DESIGN  
PROJECT MANAGEMENT

 **CGS Schmidt**  
YOUR **TRUSTED** BUILDING PARTNER

CONSTRUCTION MANAGEMENT  
COST ESTIMATING  
CONSTRUCTION SCHEDULING



# project team



---

CIVIL ENGINEERING

LANDSCAPE ARCHITECTURE



---

PLUMBING DESIGN

FIRE PROTECTION DESIGN

HVAC DESIGN/ENGINEERING

ELECTRICAL ENGINEERING

DATA/TELECOMMUNICATIONS WIRING DESIGN

SECURITY SYSTEM DESIGN



---

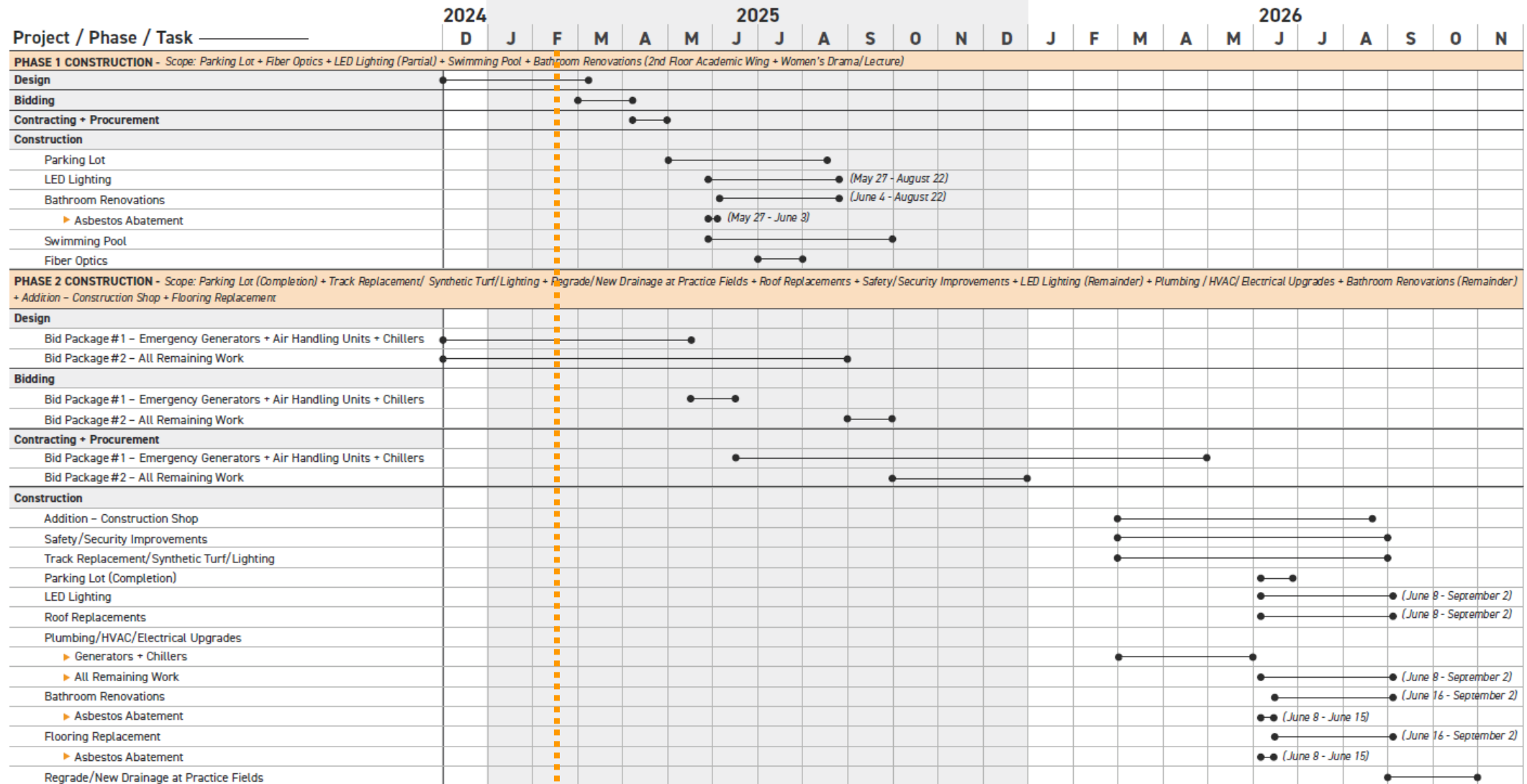
POOL SYSTEMS DESIGN/ENGINEERING



# preliminary timeline

**BRAY**ARCH

# preliminary timeline

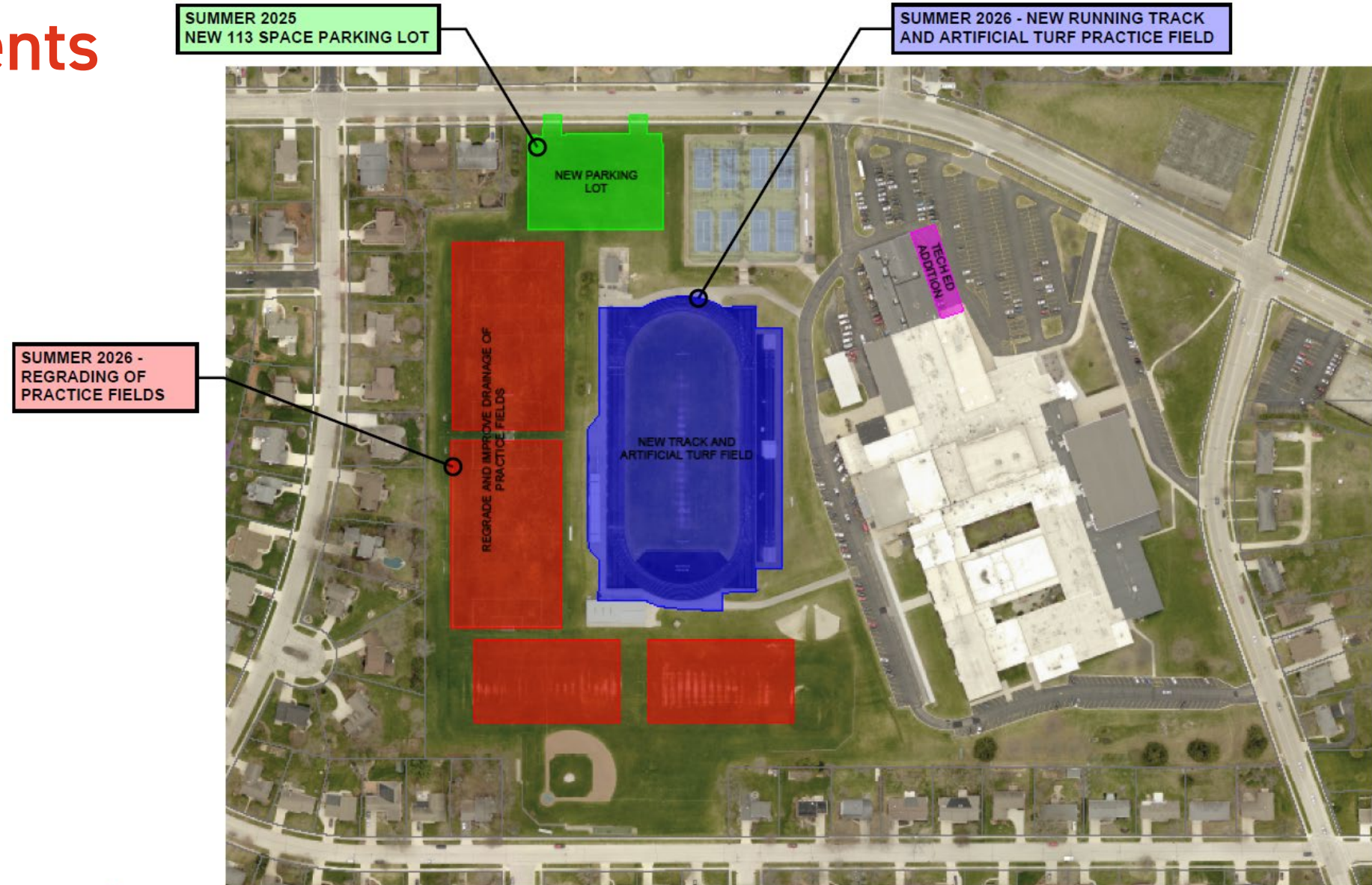


# project update

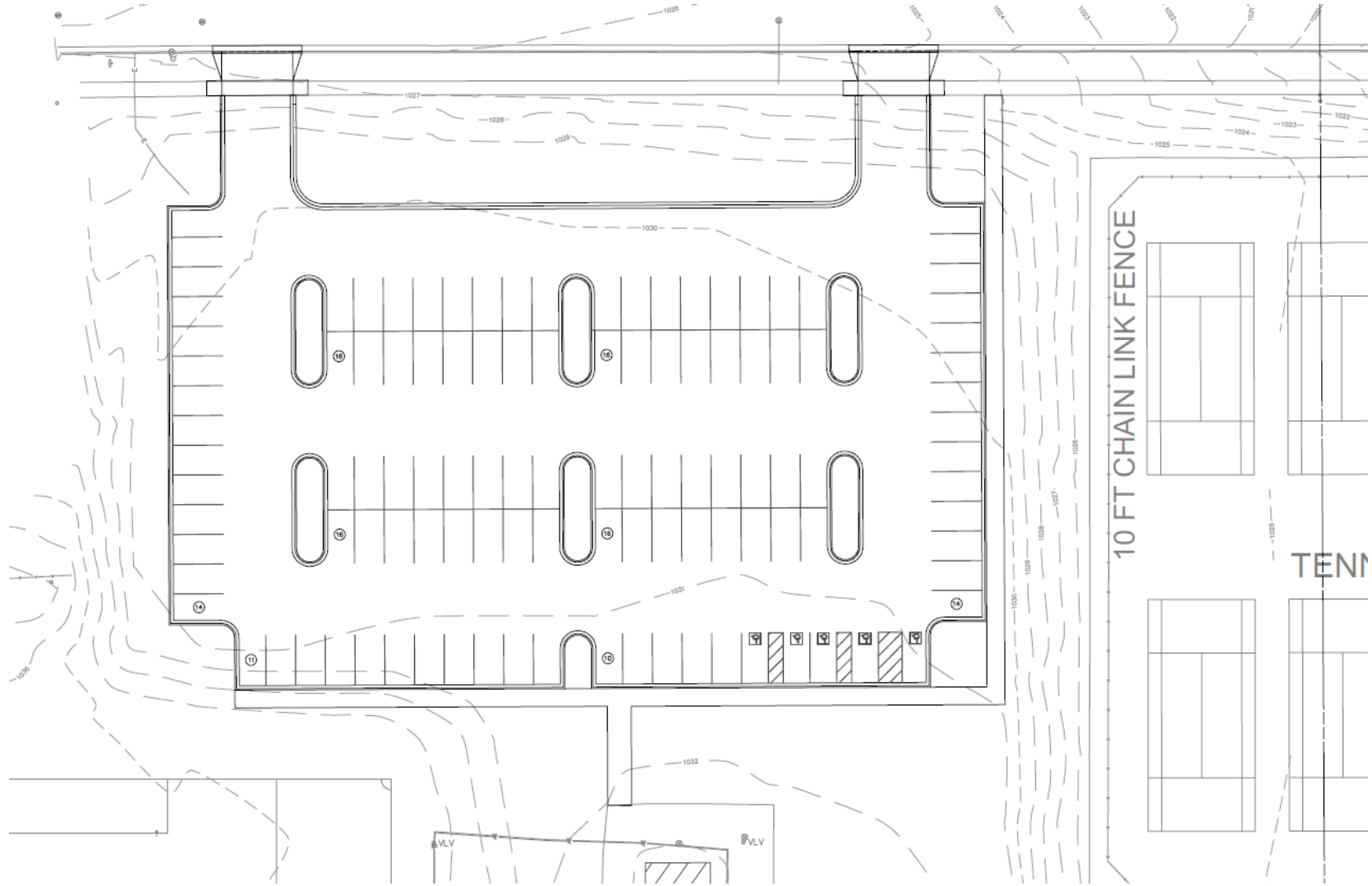
**BRAY**ARCH



# site improvements

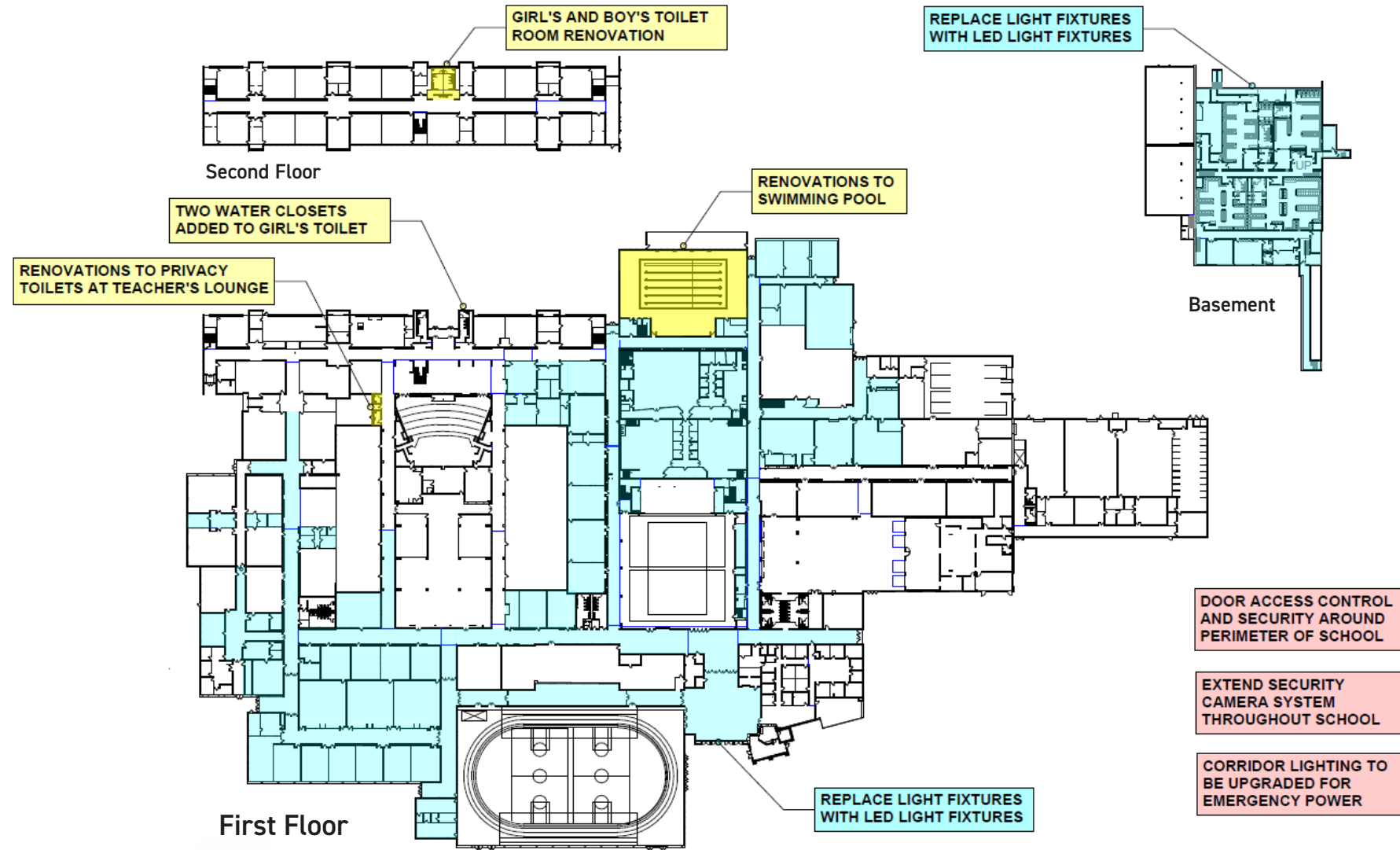


# preliminary parking lot plan

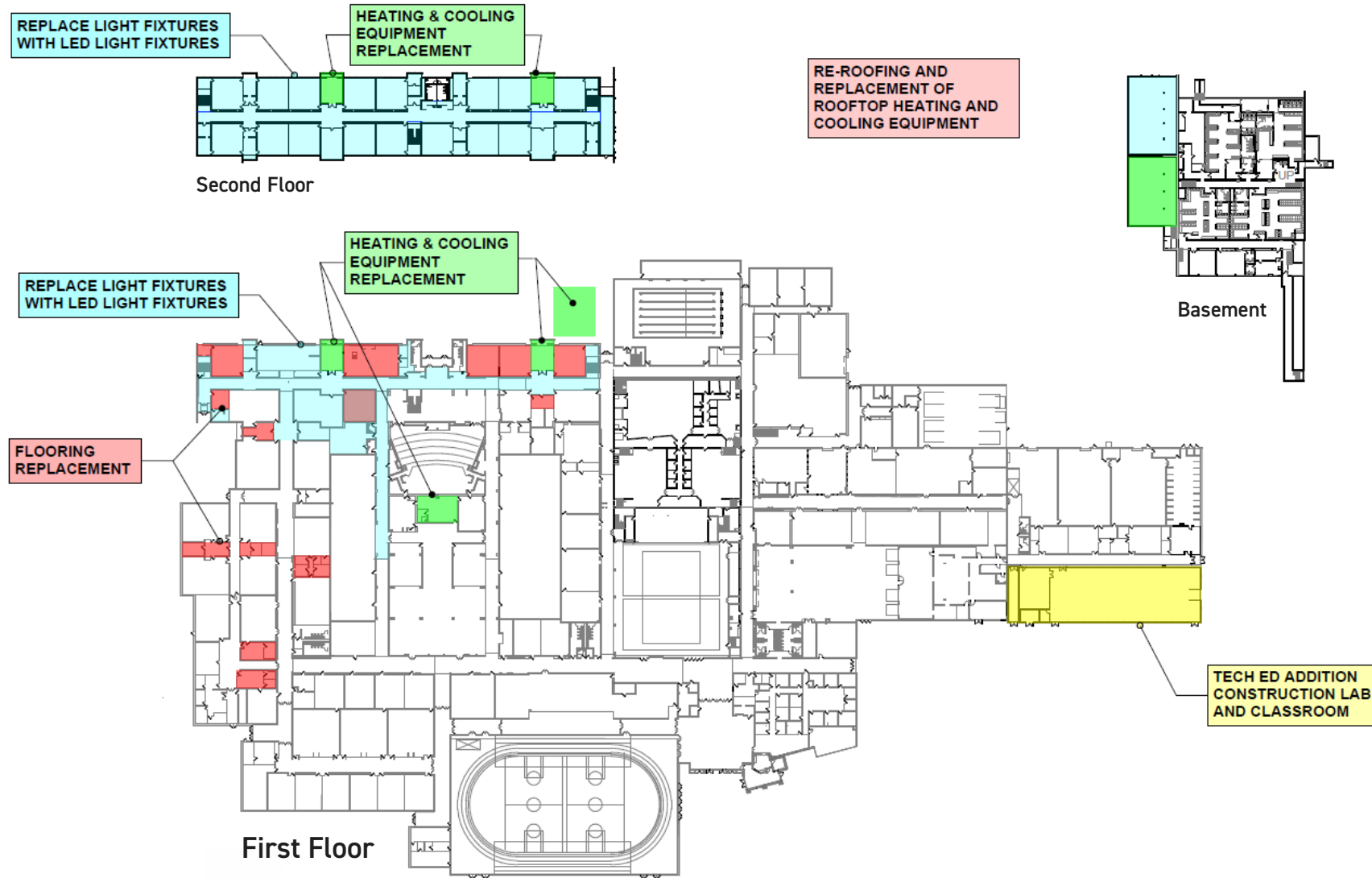




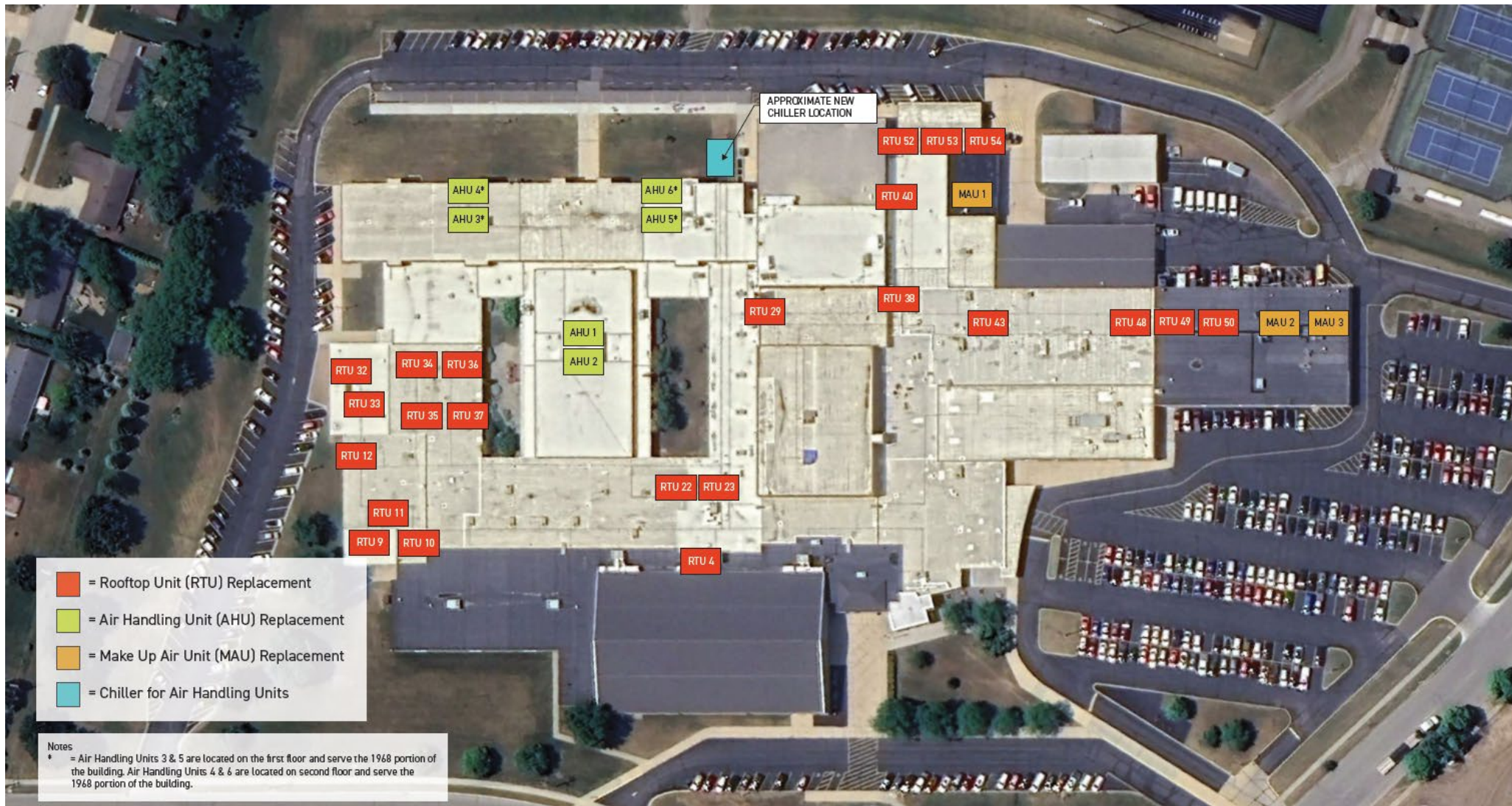
# construction phase 1 scope



# construction phase 2 scope

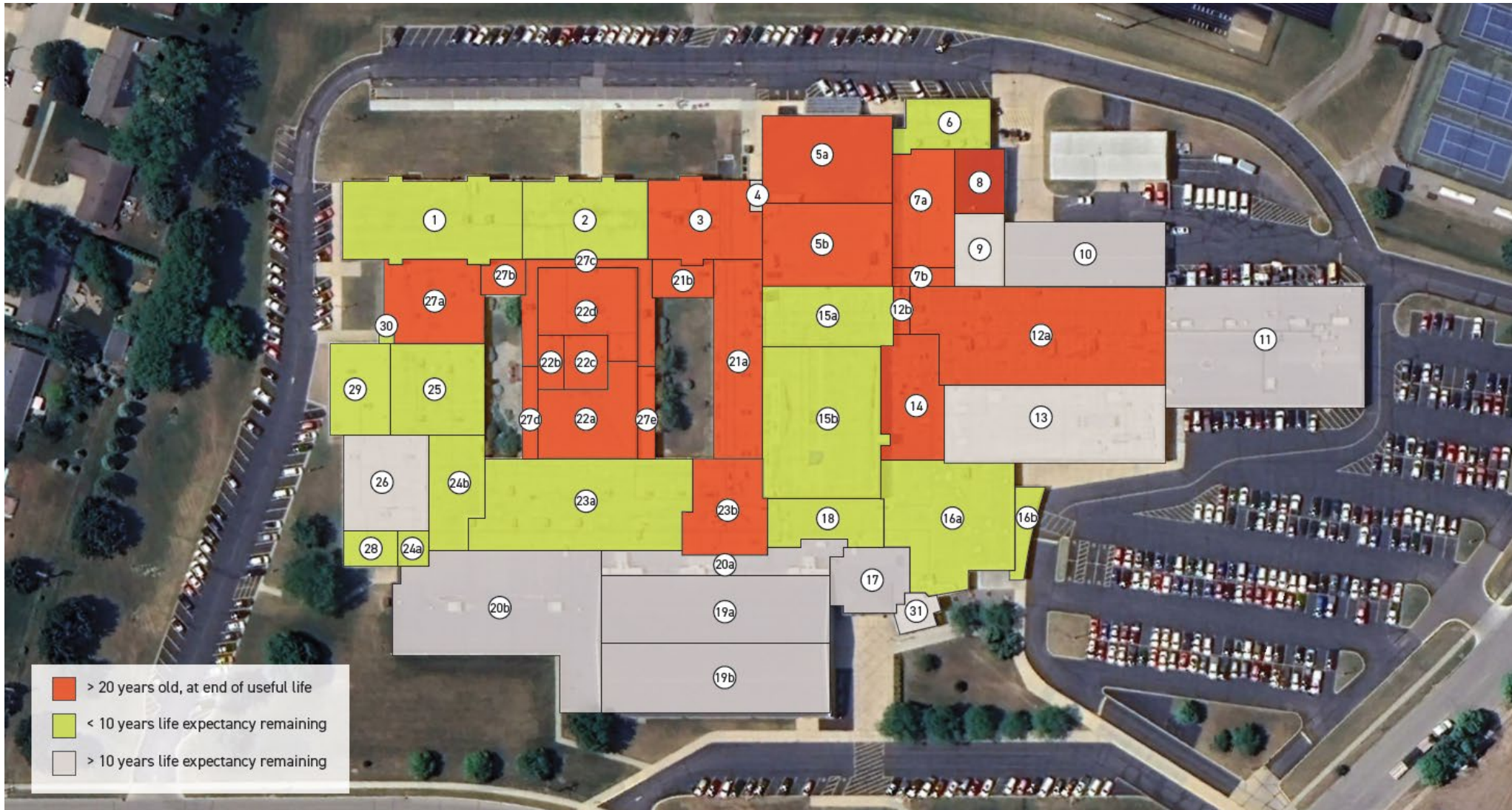


# HVAC improvements





# roof replacements



**BRAY**  
ARCHITECTS

