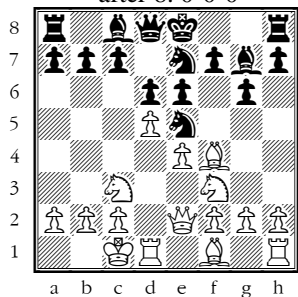


2008 National High School Championship

Under 1600 Section

Round 1: Greg Brey, (WI, 1015) vs. Stanley Switalski, (NY, 1358)

after 8. 0-0-0



1.e4 g6 2.Nf3 d6 3.Nc3 Bg7 4.d4 Nc6 5.d5 Ne5
 6.Bf4 e6 7.Qe2 Ne7 8.0-0-0 (Diagram)
 [Brey: "This was my dominating move."]

8...Nxf3 9.Qxf3 0-0 10.e5 Nf5 11.exd6 Nxd6
 12.dxe6 fxe6 13.Qg3 [Diagram] e5
 [Blunder by Switalski.]

14.Bxe5 Bxe5 15.Qxe5 Rf6

[Switalski blunders again, and Brey makes the right move!]

16.Ne4 [Diagram] Rf5

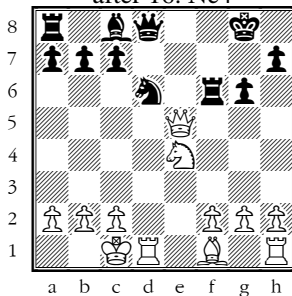
[Switalski's last blunder spells the end.]

17.Bc4+ Kf8
 18.Qh8+ Ke7
 19.Qxh7+ Kf8
 20.Qg8+ Ke7
 21.Qg7+ Ke8 [Diagram]

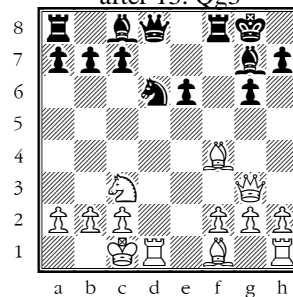
Forced mate in 7, two different starts.

22.Nxd6+ cxd6 23.Rhe1+ Re5 24.Rxe5+ dxe5
 25.Qf7# 1-0

after 16. Ne4



after 13. Qg3



after 21... Ke8

